

## KCPN

### ASSEMBLY KITS FOR COMPRESSION LOAD CELLS



Assembly kits for CP compression cells: stainless steel accessories designed for weighing silos, tanks, hoppers. It is advisable to install the weighing system using just the accessory without the cell.

Working in cooperation with:

**MWS LTD**

UNIT 17 HUTCHINSON STREET - LE2 0BD - LEICESTER  
Tel. 0044-1162426910 Fax. 0044-1162426911  
andrew.clarke@mws.ltd.uk

The best solution  
for advanced industrial  
applications

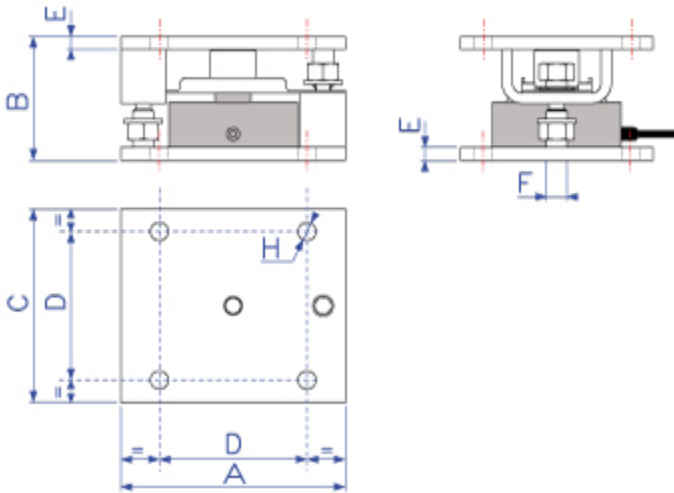
## MAIN FEATURES

- EXECUTION IN AISI304 STAINLESS STEEL
- GREAT RESISTANCE TO LATERAL FORCES
- OVERTURN-PROOF SCREW JACKS FOR EASY INSTALLMENT AND/OR SUBSTITUTION OF THE LOAD CELL
- SELF-CENTERING CONNECTION SEGMENT BETWEEN LOWER AND UPPER PLATES.

### ⚠ ATTENTION ⚠

- The KCPN kit is designed for allowing the correct functioning of the cells and for obtaining the requested weighing accuracy, but does not give protection to the cell and neither to the structure.
- The system designer and installer is obliged to search for the best solutions against lateral forces, capsizing, and overload taking into consideration the:
  - knocks and vibrations;
  - wind shear;
  - sysmic classification of the installation area;
  - support base consistence.

## DETAIL 1



Code	Dimensions in mm						
	A	B	C	D	E	F	H
KCPN10	175	96	150	115	10	M16	ø14
KCPN15	175	96	150	115	10	M16	ø14
KCPN30	230	118	200	160	10	M20	ø17
KCPN100	320	154	320	250	15	M30	ø23



www.diniargeo.com



“YOUR WORLDWIDE PARTNER FOR WEIGHING,”

DINI ARGEO  
FRANCE sarl  
Nogent-sur-Marne

DINI ARGEO  
GMBH  
Sinsheim - Germany

DINI ARGEO  
UK Ltd  
Taunton - United Kingdom

DINI ARGEO WEIGHING  
INSTRUMENTS Ltd  
Shanghai - China

DINI ARGEO  
WEIGHBRIDGES  
Calto (RO) - Italy



HEAD OFFICE  
Via Della Fisica, 20  
41042 Spezzano di Fiorano - Modena - Italy



**MWS LTD**

UNIT 17 HUTCHINSON STREET - LE2 OBD - LEICESTER

Tel. 0044-1162426910 Fax. 0044-1162426911

andrew.clarke@mws.ltd.uk

SALES AND TECHNICAL ASSISTANCE SERVICE