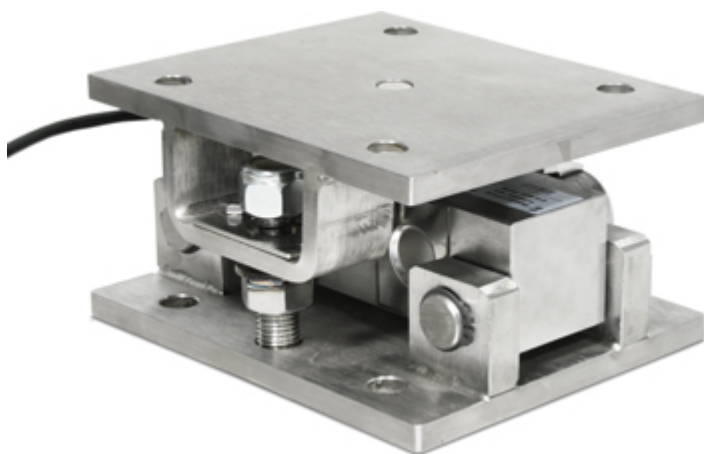


KDSBN

ASSEMBLY KITS FOR DOUBLE SHEAR BEAM LOAD CELLS



Mounting kits for DSBi double shear beam load cells: Accessories suitable for weighing hoppers, tanks, platforms, etc. etc. The special articulation guarantees an excellent measuring accuracy also in the presence of dilatations and/or bending of the weighing structure.

Working in cooperation with:

MWS LTD

UNIT 17 HUTCHINSON STREET - LE2 OBD - LEICESTER
Tel. 0044-1162426910 Fax. 0044-1162426911
andrew.clarke@mws.ltd.uk

The best solution
for advanced industrial
applications

MAIN FEATURES

- EXECUTION IN AISI304 STAINLESS STEEL
- GREAT RESISTANCE TO LATERAL FORCES
- OVERTURN-PROOF SCREW JACKS FOR EASY INSTALLMENT AND/OR SUBSTITUTION OF THE LOAD CELL
- SELF-CENTERING CONNECTION SEGMENT BETWEEN LOWER AND UPPER PLATES.

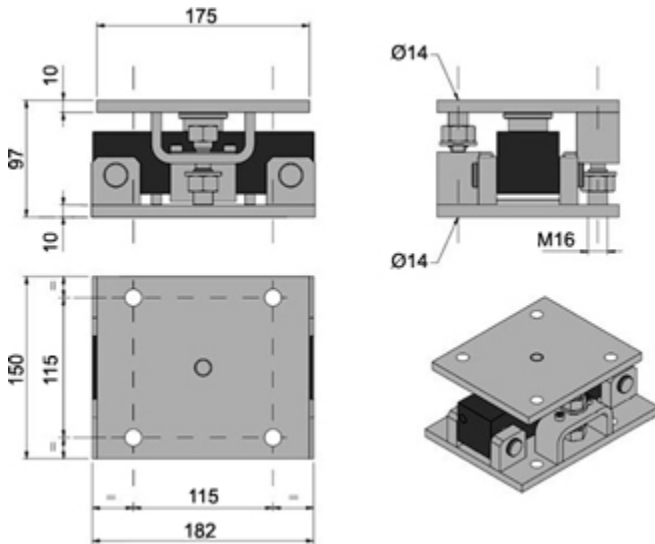


ATTENTION



- The KDSBN kit is designed for allowing the correct functioning of the cells and for obtaining the requested weighing accuracy, but does not give protection to the cell and neither to the structure.
- The system designer and installer is obliged to search for the best solutions against lateral forces, capsizing, and overload taking into consideration the:
 - knocks and vibrations;
 - wind shear;
 - seismic classification of the installation area;
 - support base consistence.

DETAIL 1



KDSBN: dimensions in mm



www.diniargeo.com



DINI AR GEO
FRANCE sarl
Nogent-sur-Marne

DINI AR GEO
GMBH
Sinsheim - Germany

DINI AR GEO
UK Ltd
Taunton - United Kingdom

DINI AR GEO WEIGHING
INSTRUMENTS Ltd
Shanghai - China

DINI AR GEO
WEIGHBRIDGES
Calto (RO) - Italy



HEAD OFFICE
Via Della Fisica, 20
41042 Spezzano di Fiorano - Modena - Italy



MWS LTD

UNIT 17 HUTCHINSON STREET - LE2 OBD - LEICESTER

Tel. 0044-1162426910 Fax. 0044-1162426911

andrew.clarke@mws.ltd.uk

SALES AND TECHNICAL ASSISTANCE SERVICE